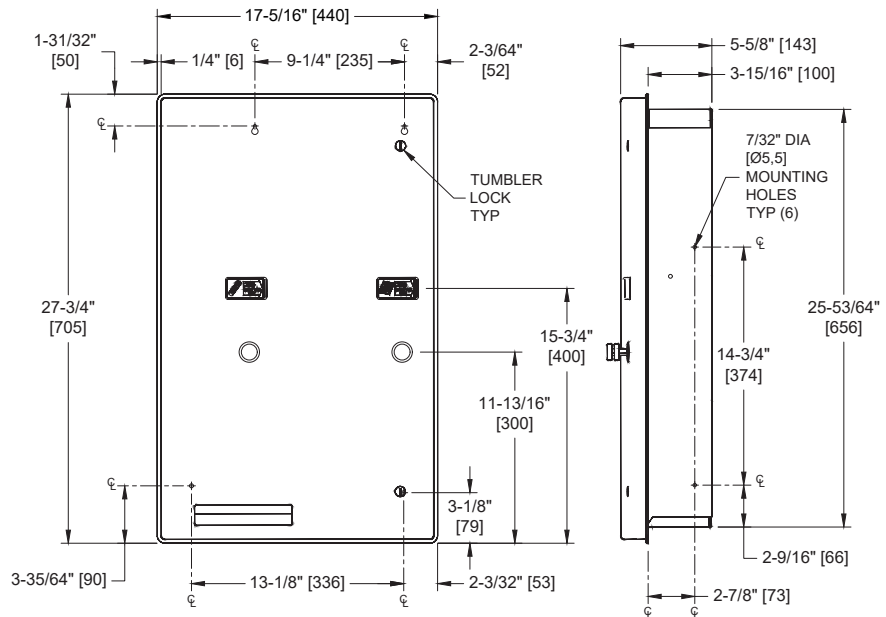
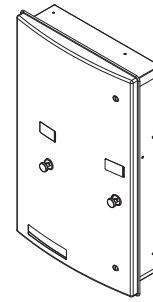
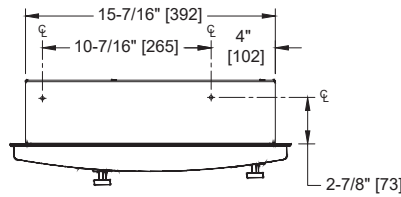


Roval™ Dual (31) Napkin/ (22) Tampon Vendor – Recessed – 25¢ - 50¢ or Free Operation

Feminine Hygiene Vendors and Disposals

Roval

MasterFormat Section 10 28 13



NOTE:
ALL DIM'S INCH [MM]
ILLUSTRATION FOR REF ONLY AND NTS
FOR CLEANING INSTRUCTIONS SEE APPROPRIATE SECTIONS IN
PRODUCT CARE & MAINTENANCE BULLETIN (PCM) ON ASI WEBSITE

Scan for Information



SUSTAINABILITY/LEED

MR 4.1 (1) MR 6 (1) EQ 4.2 (1)
MR 4.2 (1) EQ 4.1 (1) EQ 4.4 (1)

PRODUCT OVERVIEW

Dispenses 31 napkins and 22 tampons. Door has 18 gauge type 304 satin finish stainless steel, with 2 flush tumbler locks. Universal coin mechanism allows for 25¢, 50¢ and free (no coin) operation. Choose appropriate suffix (-25, -50 or -F). Door shall be 18 gauge type 304 stainless steel alloy 18-8. Cabinet shall be 20 gauge same grade stainless steel. Door shall be attached with a multi-staked piano hinge and shall be held closed with two (2) flush tumbler locks keyed alike to other ASI washroom equipment.

KEY FEATURES & SPECIFICATIONS

- Curved front adds strength and elegance
- Concealed, Multi-Staked Piano Hinge
- Type 304 Stainless Steel - Satin Finish
- Recessed
- Dual Vendor 25¢ - 50¢ or Free Operation
- 31 Napkins AND 22 Tampons

- 204684-25 – allows for 25¢ operation
- 204684-50 – allows for 50¢ operation
- 204684-F – allows Free (no coin) operation

OPERATION & MAINTENANCE

Deposit of specified coin allows operation of dispenser. Napkin and tampon dispensers operate independently. Selected product drops into vending opening after operator actuation. Indicator displays empty condition and blocks coin slot when product is depleted. Unit vend product supply is replenished on cycle determined by maintenance needs by opening door and manually reloading product into dispenser supply tracks. Locked compartment prevents unauthorized access. Track weights **MUST BE USED** to provide positive feed.

TECHNICAL INFORMATION / PRODUCT PROPERTIES

Property	Value
Dimensions	17-5/16" [440] x 27-3/4" [705] x 5-5/8" [143]
Construction	Type 304 Stainless Steel - Satin Finish
Mounting	Recessed
Capacity	NAPKINS, SINGLES, CARDBOARD-BOXED, SEMIGLOSS FINISH CAPACITY 31 BOX SIZE 4-1/4" [108] x 3" [76] x 1-1/8" [29] <input type="checkbox"/> Stayfree# 4 <input type="checkbox"/> Guards# 247, or 147 <input type="checkbox"/> Kotex# 704, 707, 07010, 07040, 07045, 07300, 07320 <input type="checkbox"/> Pure-Nat# M-4 <input type="checkbox"/> Modess# 4 TAMPONS, CYLINDER, CARDBOARD, SEMIGLOSS, CRIMPED ENDS CAPACITY 22 TUBE SIZE 3/4" diameter [Ø19] x 5-1/4" [134] <input type="checkbox"/> Tampax <input type="checkbox"/> Modess Tampons

INSTALLATION

Mount unit on wall using four (4) #10 x 1" [M5x25] self-threading pan head screws (by others). For compliance with 2010 ADA Accessibility Standards install unit so that coin slots are 48" [1219] maximum Above Finished Floor (AFF). Be aware that some local codes (e.g. California, CBC) may require CSH to be 40" [1016] maximum AFF. Note that coin slot centerline is 15-7/8" [403] above bottom edge of unit.

Rough Wall Opening (RWO) required is 15-5/8" [397] W x 26-1/8" [664] H x 4" [102] D minimum

WARRANTY

One (1) Year from date of Invoice